

Migrating GroupWise®

from NetWare® and Windows to Linux

Morris Blackham

GroupWise Maintenance Development
Manager
mblackham@novell.com

Danita Zanre

Senior Consultant
danita@caledonia.net

Novell®

Who am I? - Morris

- 16 years working with WordPerfect Office, GroupWise®
- Original WordPerfect Office “Swat” team
- Consultant with teltrust.com/dotOne
- 5 years as GroupWise Internet Agent QA engineer
- Currently development manager for GroupWise CPR maintenance team

Who am I? - Danita

- Worked with “GroupWise®” since WPO 2.0
- Consultant specializing in GroupWise
- Author of various books and articles on Groupwise and email in general
- Mother of three lovely children
- Wife of funny Scotsman
- Younger than Morris
- “GroupWise Goddess” status

Agenda

- ✓ Why run GroupWise® on Linux
- ✓ Preparing to migrate
- ✓ Domain Migration
- ✓ Post Office Migration
- ✓ What's going on behind the scenes
- ✓ Troubleshooting
- ✓ Demo
- ✓ Questions and Answers



Why GroupWise® on Linux

- Improved stability
 - Fewer operating system faults
 - Reduced impact from other application faults
- Better application fault handling and recovery
 - GroupWise agents restart within seconds
 - Core files are generated within seconds
- Lower overall impact
 - No database corruptions with agent crashes
 - Minimal database corruption on hardware/power failures

Major Differences in Linux OS

- Extremely stable OS
 - Very few system failures
 - Long periods between server restarts
- Application crashes do not affect server or other applications
- Applications run in protected memory space by design

Planning the Migration

- Planning
 - Choose Linux operating system, Open Enterprise Server or SUSE® Linux Enterprise Server
- Open Enterprise Server
 - Manageability
 - > Integrated with eDirectory™
 - > Novell client / NCP™ access to all filesystems
 - > Linux User Management
 - > Novell Remote Manager
 - Novell Clustering Services
- SUSE Linux Enterprise Server
 - 1 free server license with GroupWise® purchase

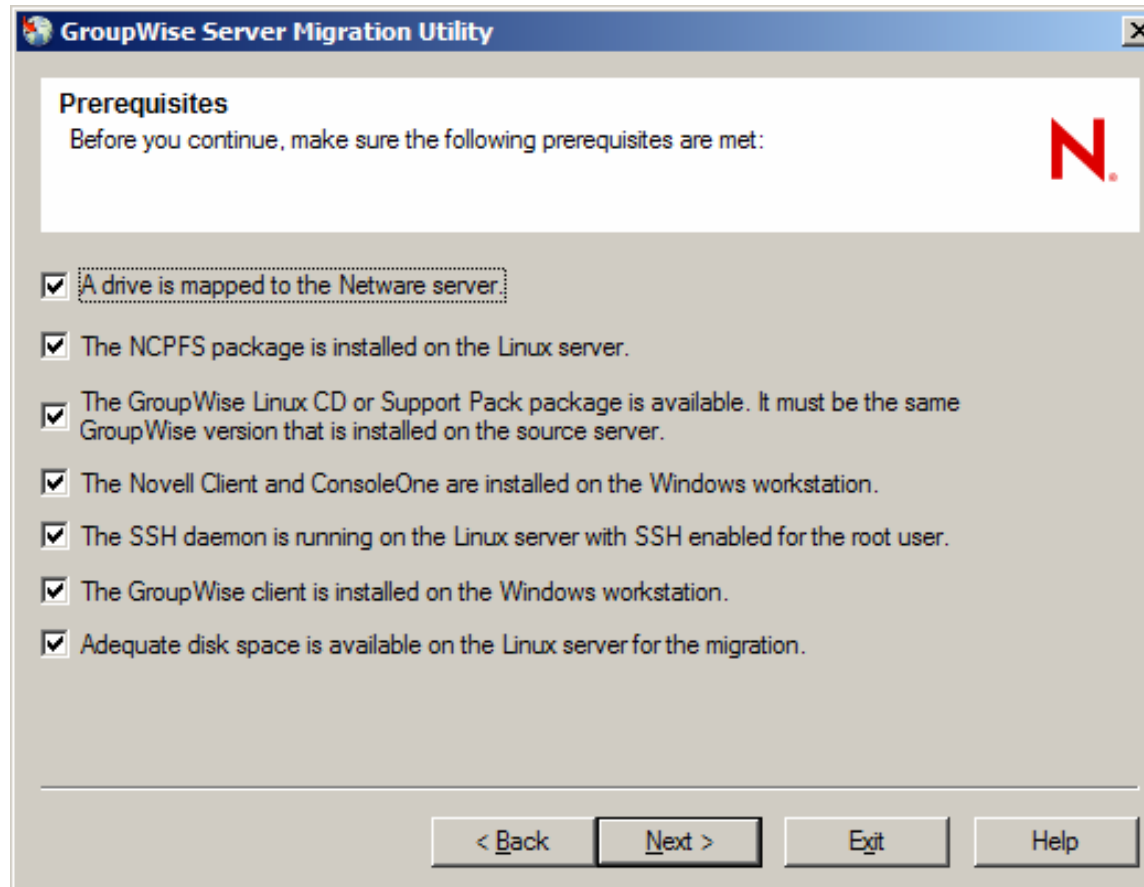


Preparing Linux Server

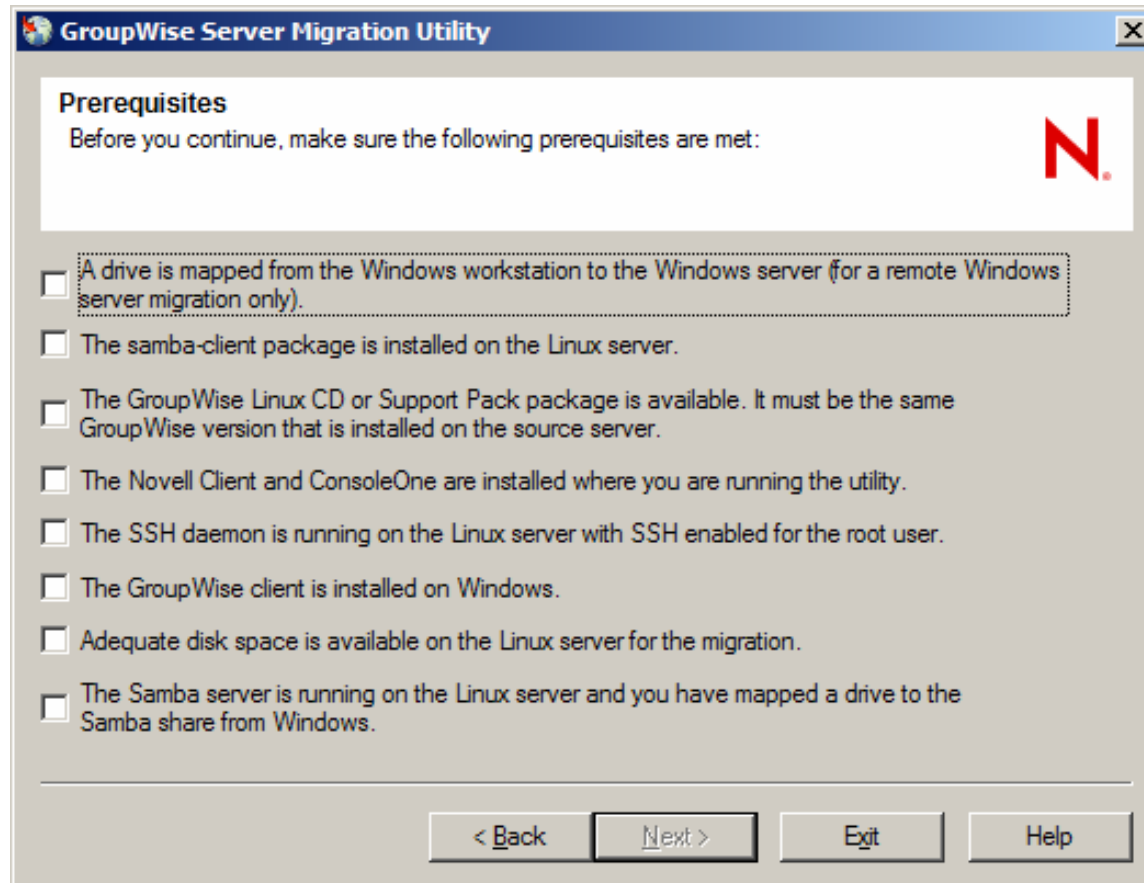
- Install and configure server
 - GroupWise® data partition
 - > Reiserfs is recommended file system
 - > Partition size depends on post office backup method
 - » dbcopy, 3 times post office size
 - » tsafsgw, 2 times post office size



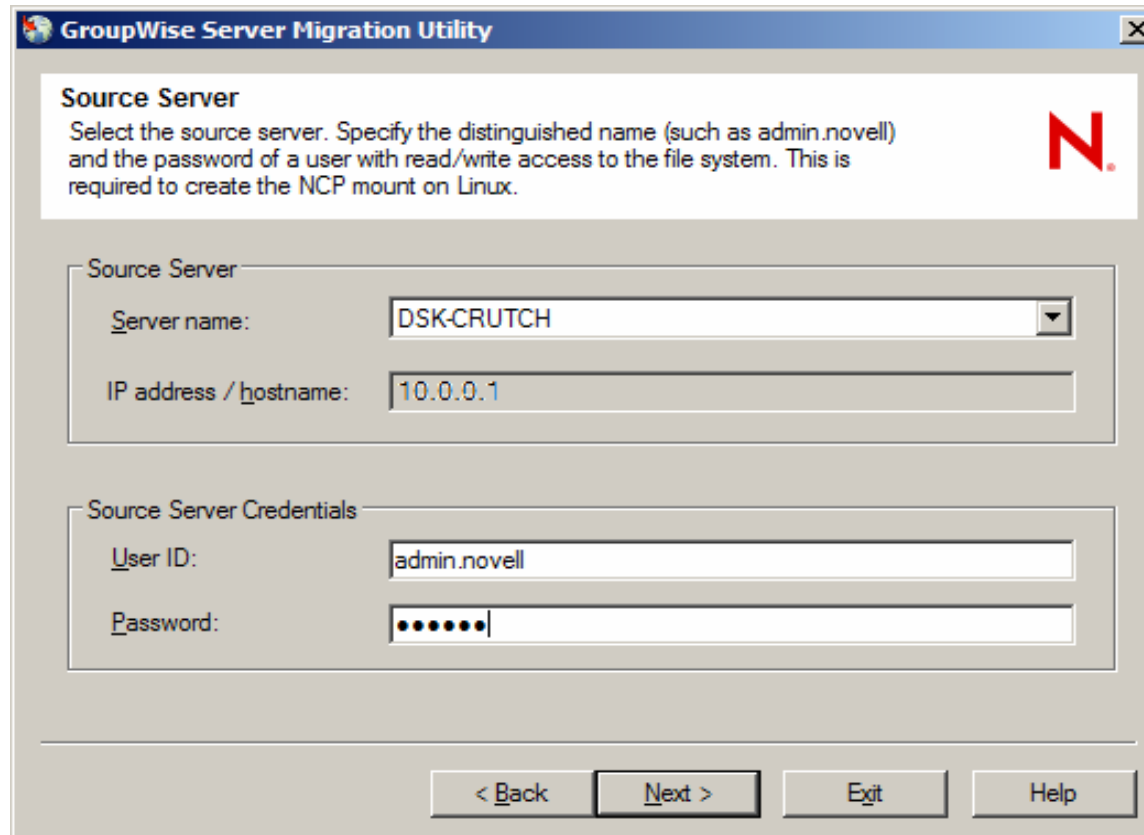
Prerequisites – NetWare®



Prerequisites – Windows



Source Server



GroupWise Server Migration Utility

Source Server

Select the source server. Specify the distinguished name (such as admin.novell) and the password of a user with read/write access to the file system. This is required to create the NCP mount on Linux.

Source Server

Server name: DSK-CRUTCH

IP address / hostname: 10.0.0.1

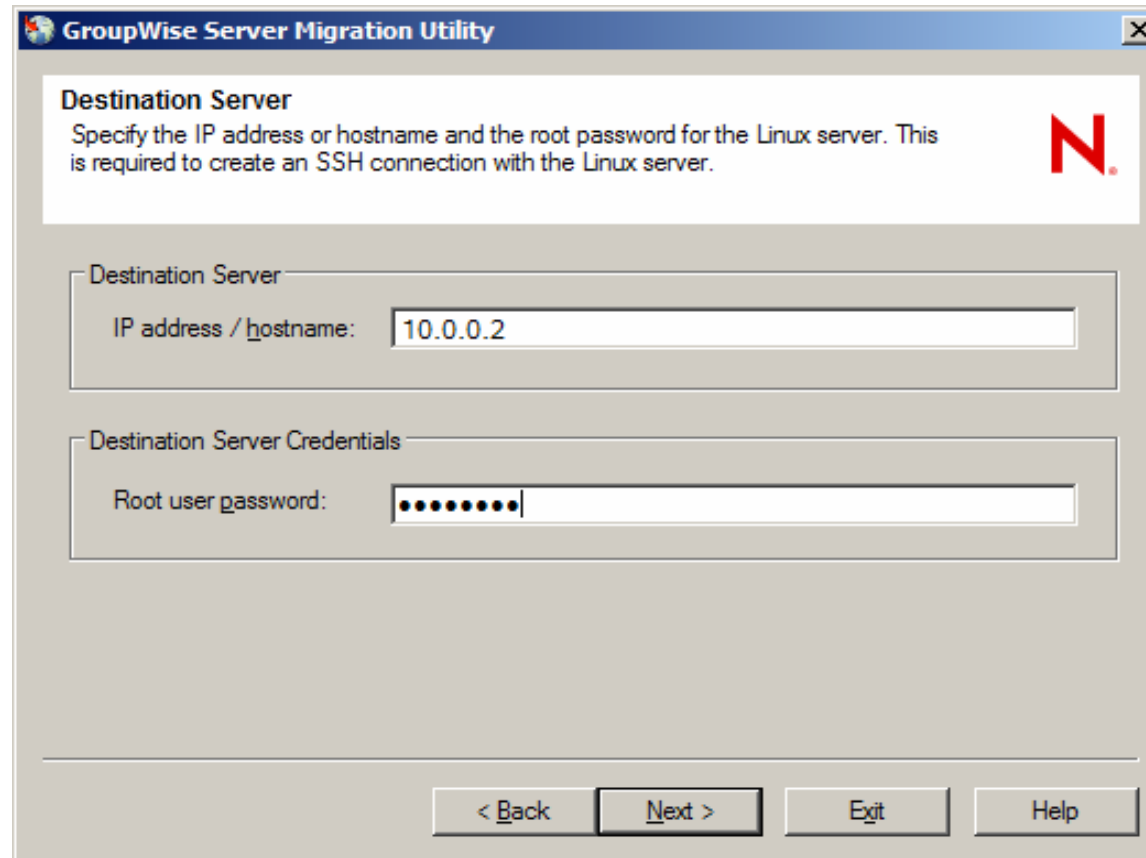
Source Server Credentials

User ID: admin.novell

Password: ●●●●●●

< Back Next > Exit Help

Destination Server



The screenshot shows a Windows-style dialog box titled "GroupWise Server Migration Utility". The main heading is "Destination Server". Below the heading is a descriptive text: "Specify the IP address or hostname and the root password for the Linux server. This is required to create an SSH connection with the Linux server." To the right of this text is a red "N" logo. The dialog contains two input sections: "Destination Server" with a text box for "IP address / hostname" containing "10.0.0.2", and "Destination Server Credentials" with a text box for "Root user password" containing ten dots. At the bottom, there are four buttons: "< Back", "Next >", "Exit", and "Help".

GroupWise Server Migration Utility

Destination Server

Specify the IP address or hostname and the root password for the Linux server. This is required to create an SSH connection with the Linux server.

Destination Server

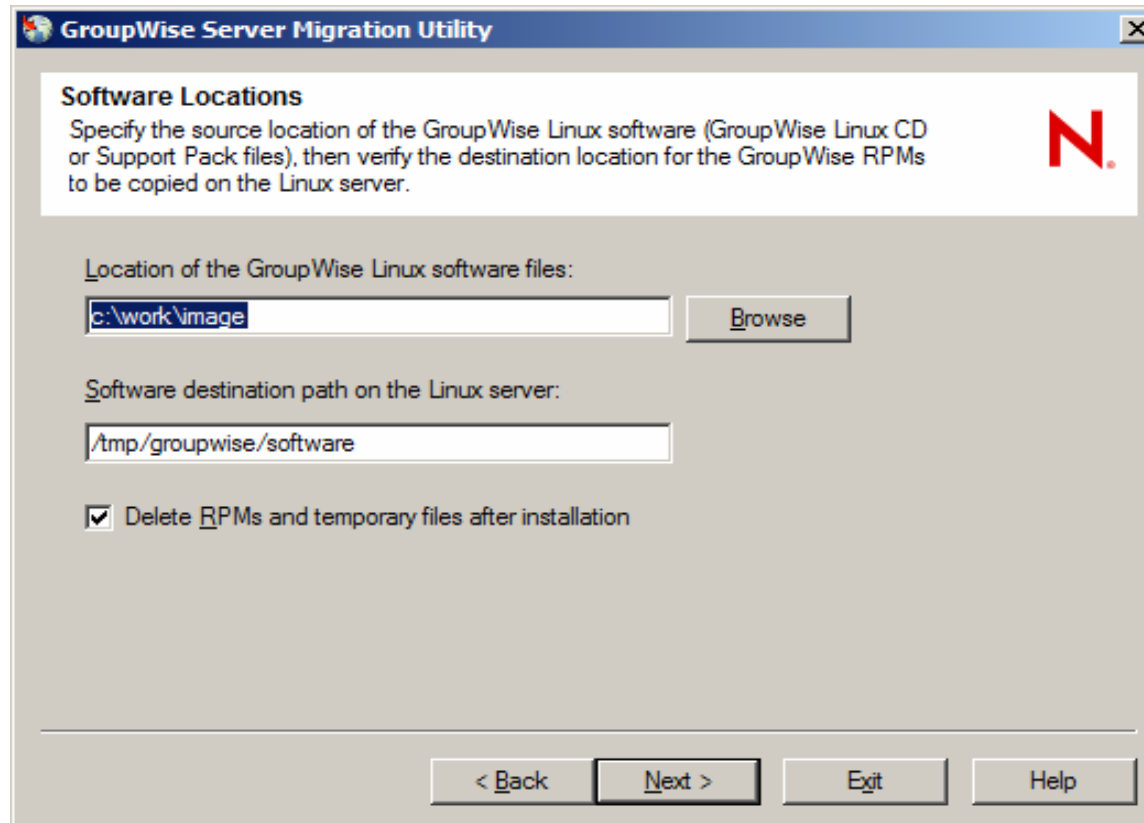
IP address / hostname: 10.0.0.2

Destination Server Credentials

Root user password:

< Back Next > Exit Help

Software Location



GroupWise Server Migration Utility

Software Locations

Specify the source location of the GroupWise Linux software (GroupWise Linux CD or Support Pack files), then verify the destination location for the GroupWise RPMs to be copied on the Linux server.

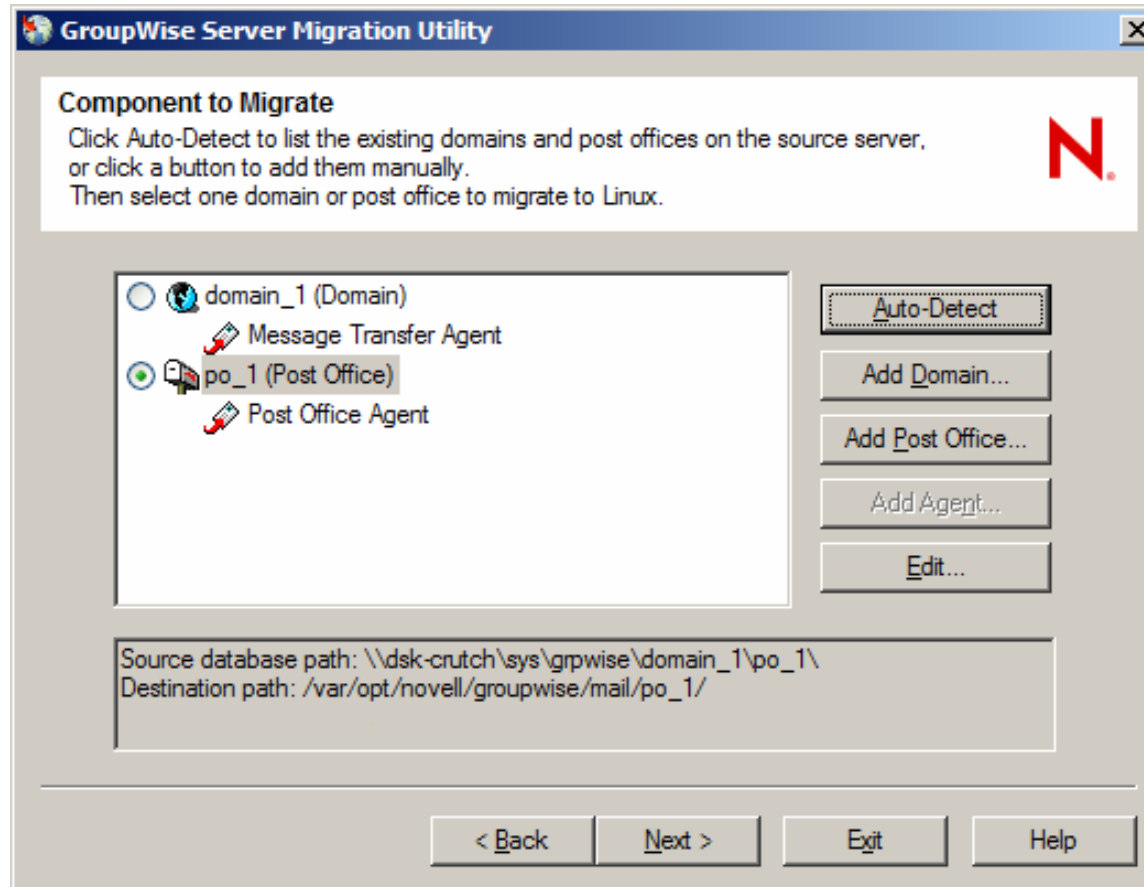
Location of the GroupWise Linux software files:

Software destination path on the Linux server:

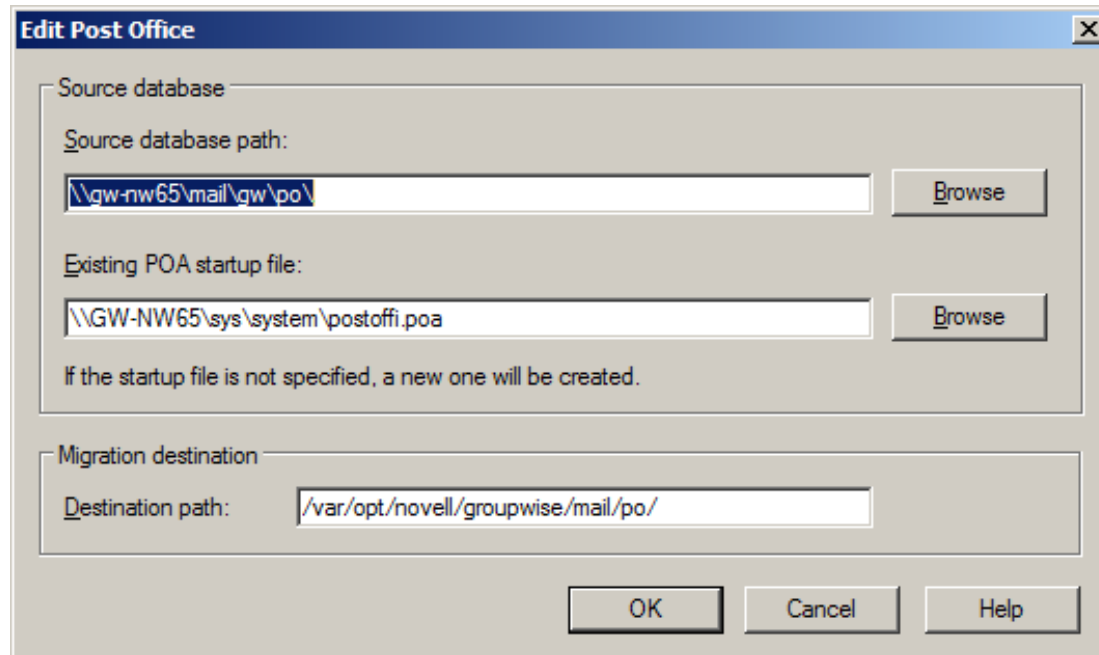
Delete RPMs and temporary files after installation

< Back Next > Exit Help

Select Component to Migrate

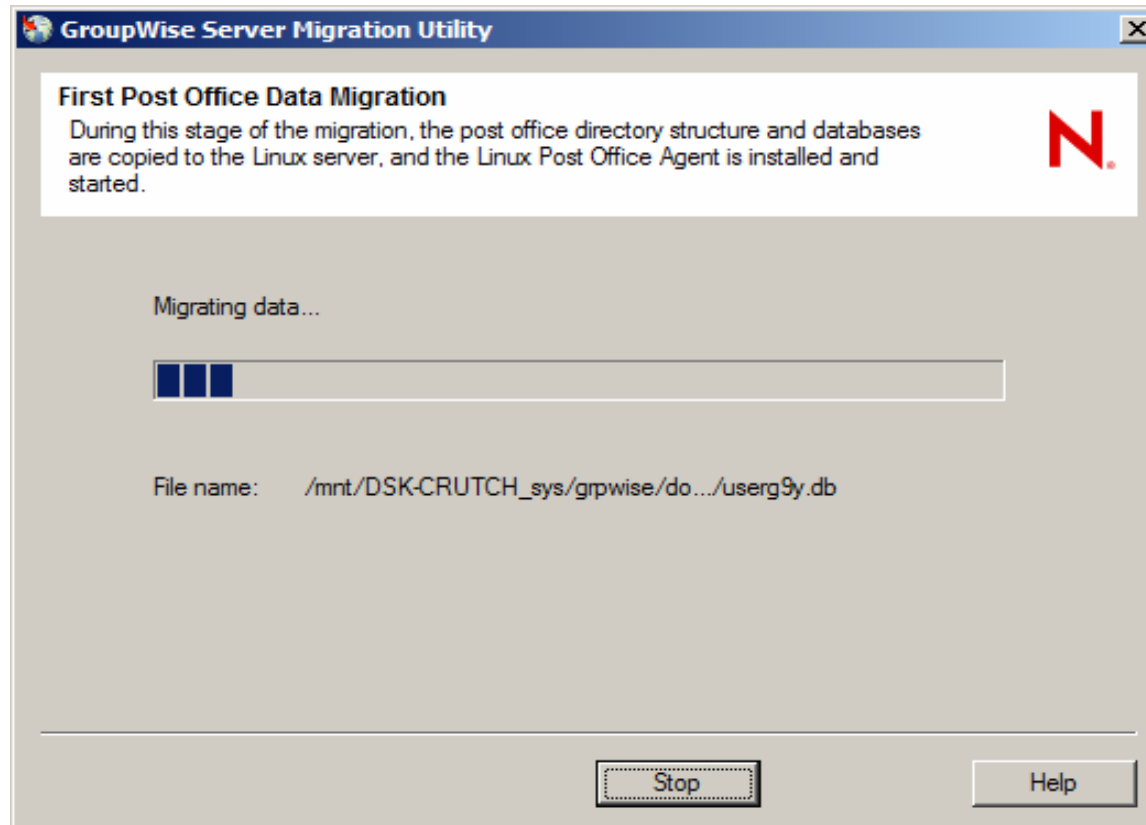


Auto Detect /Add Post Office



- Looks in SYS:\SYSTEM for GRPWISE.NCF and agent startup files
- Add Post Office to configure manually

Post Office Migration Phase One



Behind the scenes

Phase One

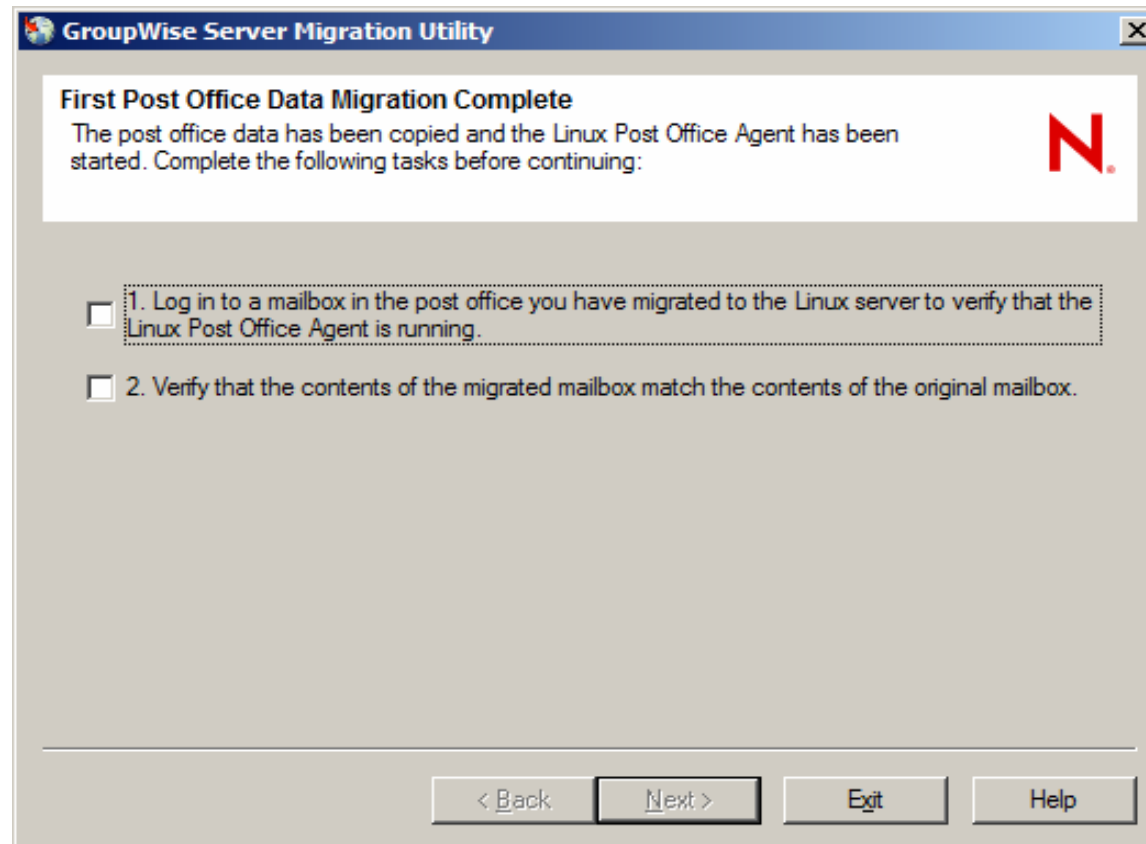
- Creates directory structure on Linux server
- Copies and installs RPM's to Linux server
- Mounts source server
 - NCP™ mount to NetWare®
 - Samba mount to Windows
- Runs `dbcoppy -a 127.0.0.1 -p -m -f -k -u 5001`
 - **a** sends status update to update utility
 - **p** designates a post office copy
 - **m** to migrate to lower case
 - **f** first pass (phase one copy)
 - **k** don't compute size before copy
 - **u** port for `-a` parameter

Behind the scenes

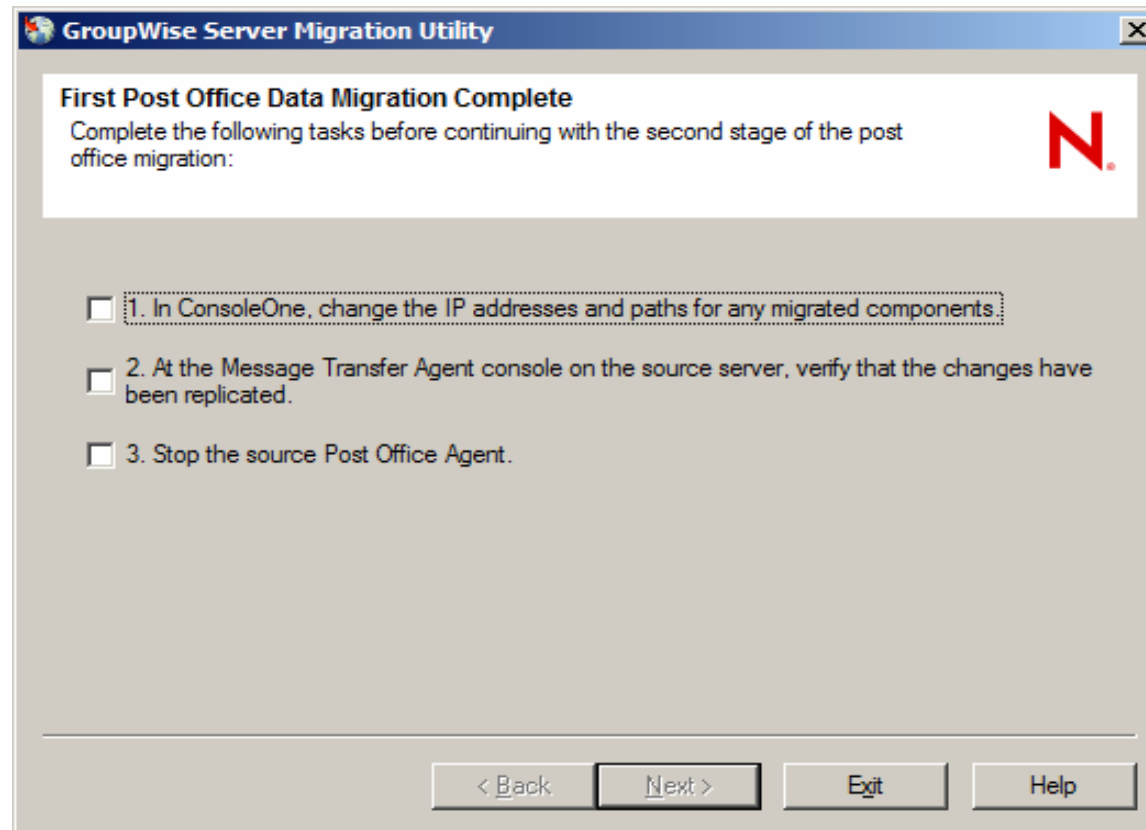
Phase One

- Creates POA startup file
- Configures gwaha.conf
- Starts POA on Linux server for testing
- Removes RPM files (if selected)
- Shuts down POA

Post Office Migration Phase One



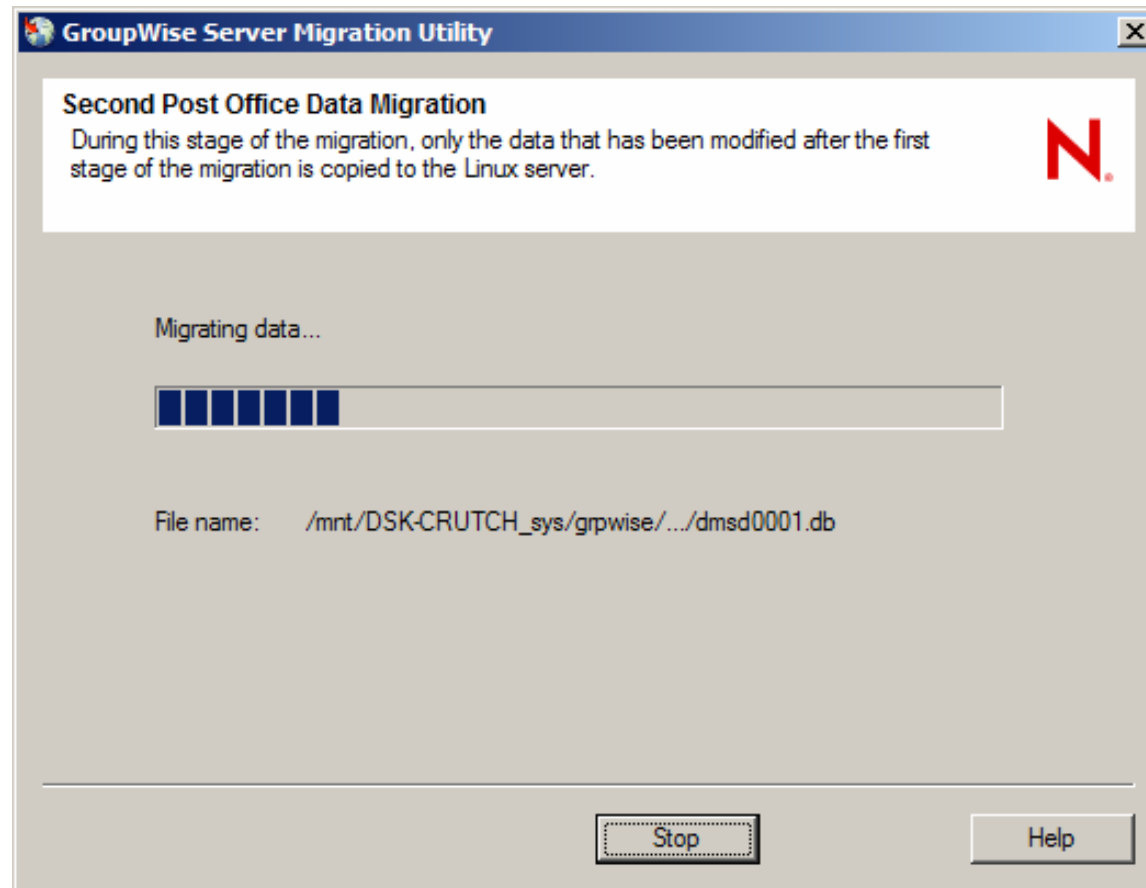
Post Office Configuration



Post Migration Configuration

- Edit Post Office configuration
 - Post Office UNC path (do this first)
 - POA IP address
 - POA Platform
 - ports (if needed)
 - Log file path
 - SSL cert/key file paths
 - Remote Library Storage area path
 - LDAP server Trusted Root certificate for LDAP authentication

Post Office Migration Phase Two



Behind the scenes

Phase Two

- Mounts source server
- `dbcopu -a 127.0.0.1 -m -s -i <date> -u 5001`
 - **a** sends status update to update utility
 - **m** to migrate to lower case
 - **s** second pass (phase two copy)
 - > -i incremental copy based on date
 - **u** port for -a parameter
- `dbcopu` executes `gwcheck` call for `/storelowercase` option
 - When -s option is used

Behind the scenes

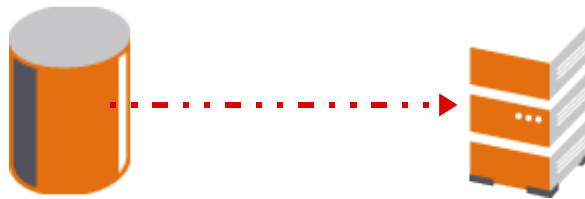
Phase Two

- Migration utility ships with own version of dbcopy
 - Optimized for performance
- Removes temp files
- Dismounts source server

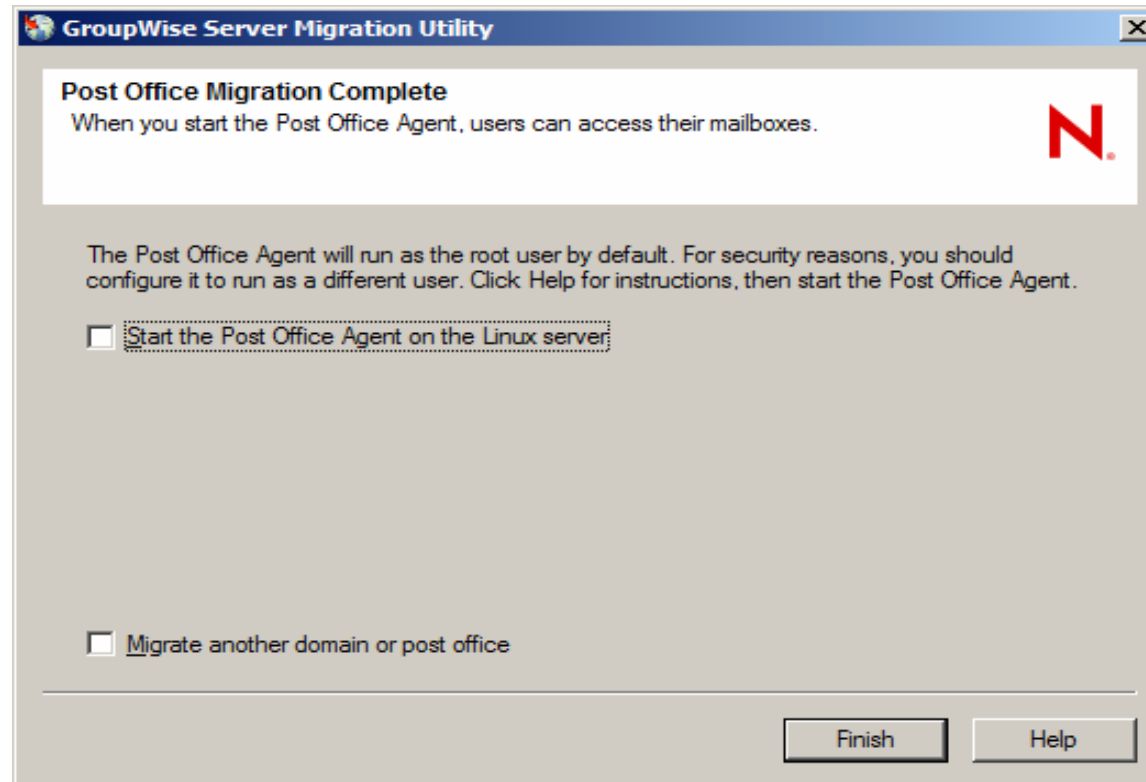


Remote Library Storage Area

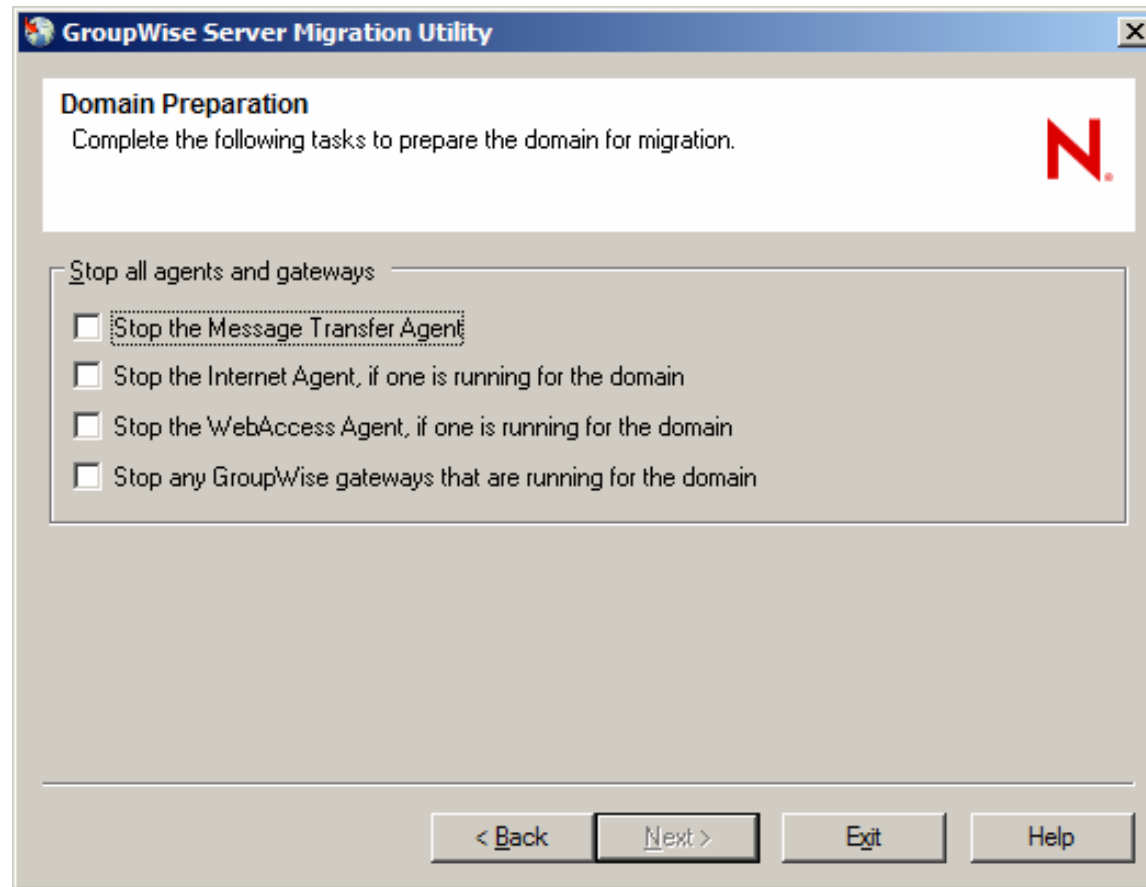
- May need to manually copy remote library storage area to Linux server
- Modify storage path in ConsoleOne®.



Post Office Migration



Domain Migration



Add Domain

Edit Domain

Source database

Source database path:

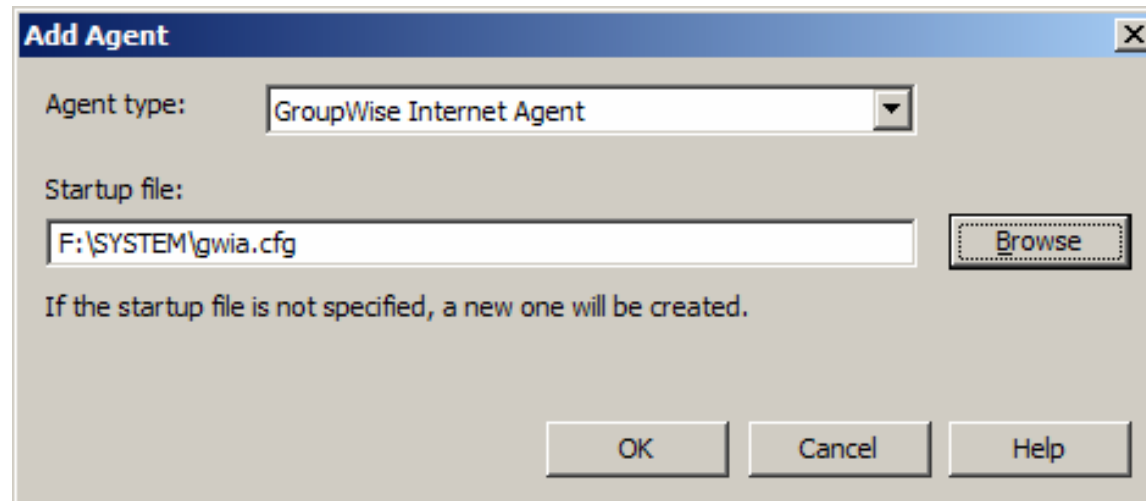
Existing MTA startup file:

If the startup file is not specified, a new one will be created.

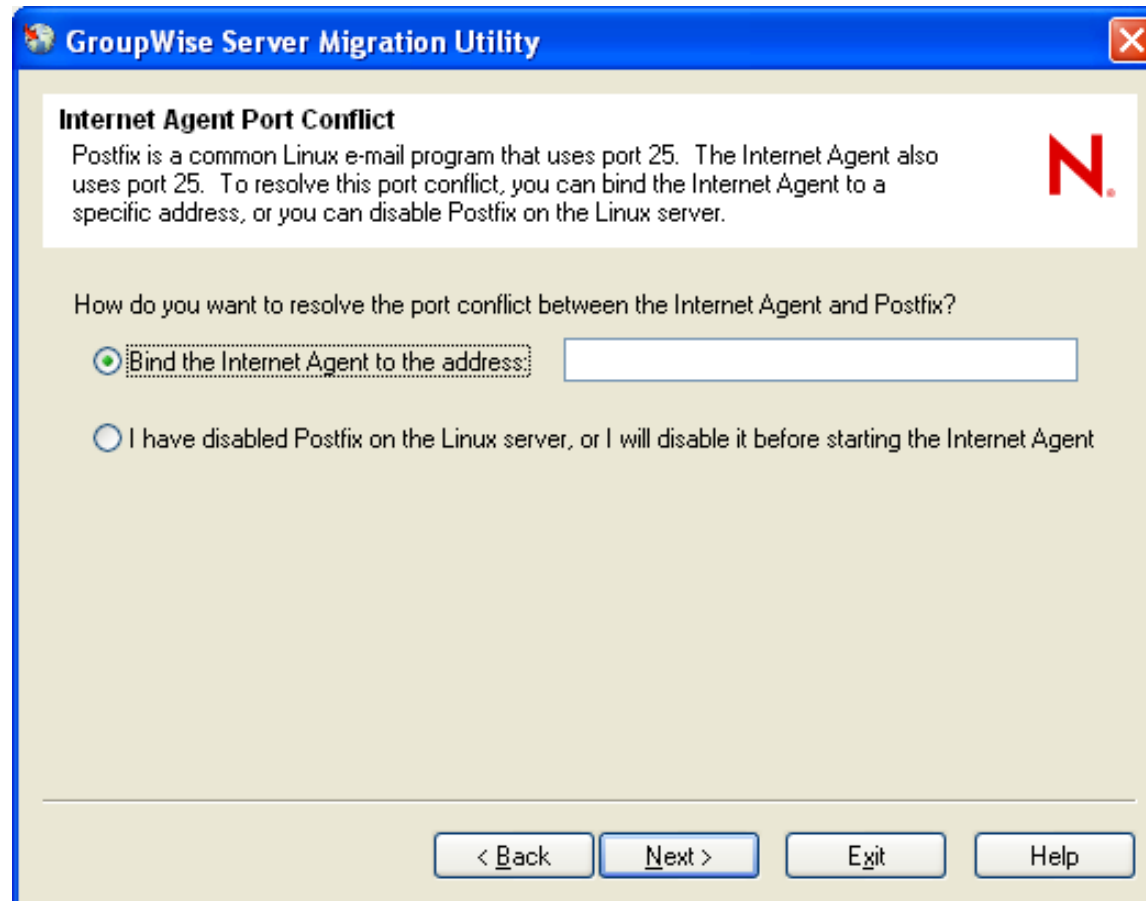
Migration destination

Destination path:

Add Agent – GroupWise® Internet Agent



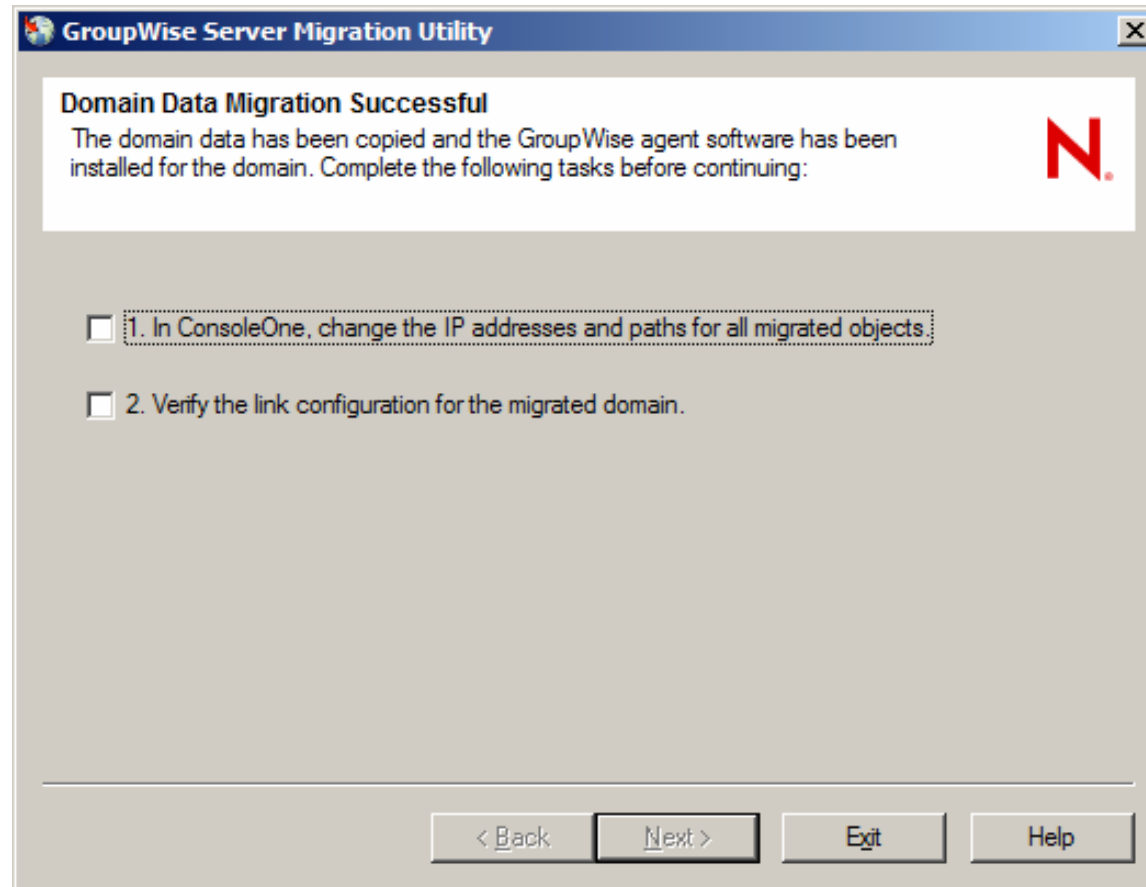
Add Agent – GroupWise® Internet Agent



Behind the scenes – Domain

- One pass only
- Creates directory structure on Linux server
- Copies and installs RPM's to Linux server
 - Includes GroupWise® Internet Agent and GWINTER, but not WebAccess application
- Mounts source server
- Runs `dbcopu -a 127.0.0.1 -d -m -k -u 5001`
 - **a** sends status update to utility
 - **d** designates a domain copy
 - **m** to migrate to lower case
 - **k** don't compute size before copy
 - **u** port for `-a` parameter

Domain Migration



Domain Migration

- Edit domain configuration
 - Domain UNC path
 - MTA IP address
 - MTA Platform
 - ports (if needed)
 - Log file path
 - Message log path (if enabled)
 - SSL cert/key file paths



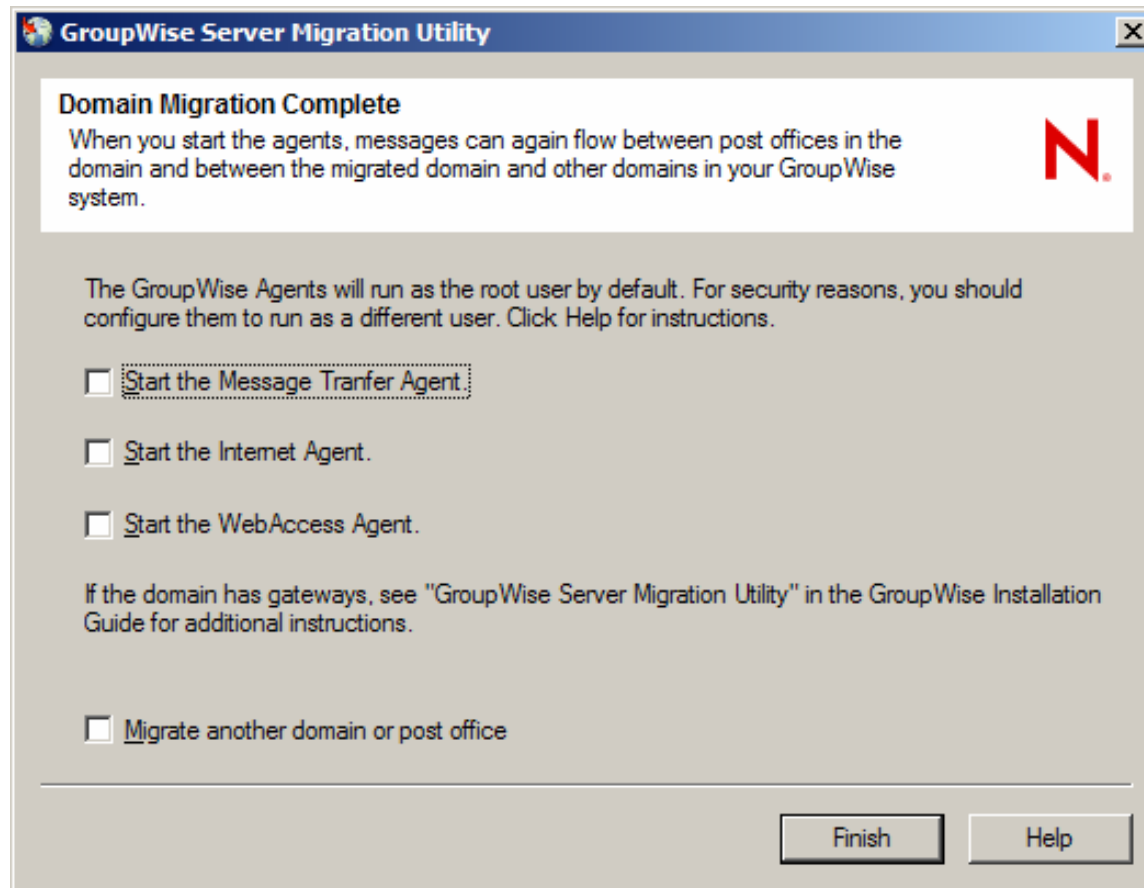
Gateways – GroupWise® Internet Agent

- Edit GWIA settings in ConsoleOne®
 - Change Platform to Linux
 - Modify NetWork Address settings
 - > Bind Exclusively to TCP/IP Address
 - » Allows coexistence with Postfix
 - Modify /dhome path (if not in current gwia.cfg)
 - Modify Log path
 - Modify SSL path
 - > May need to create new certificates for new server
- Change MX record to point to new DNS name

Gateways – WebAccess

- If running remote, edit startup file to point to new UNC for the new domain location
- Install and Configure WebAccess application on Linux Server
 - If application is on another server, copy commgr.cfg to application directory to use new agent IP address

Domain Migration



Post Migration Tips

- Modify outbound MTP IP address for Post Offices after domain migration (use HTTP Console)

- Start/Stop agents without UI

```
- /etc/init.d/grpwise start <agentname>  
  > Or rcgrpwise start <agentname>  
- /etc/init.d/grpwise stop <agent>  
- /etc/init.d/grpwise status
```

- Start agents with UI

```
- /opt/novell/groupwise/agents/bin/gwpoa -show  
  @startup.poa
```

- Install ConsoleOne® and snapins on Linux server

Troubleshooting

- Utility log file
 - gwsvrmig_MM-DD-YYYY.log
 - > In gwsvrmig directory or temp directory
 - Check log for errors
- dbcopy log file
 - > <po>/<date>gwbk.001
- ssh
 - Firewall issues – enable ssh port 22
- nfsmount/Samba mounts
 - Verify reads/writes to mounted file systems

Linux Migration Utility: Demo

The background of the slide is a solid green color with a pattern of diagonal stripes in a lighter shade of green, creating a textured, sunburst-like effect.

Questions and Answers

Learn More...

To learn more about Novell® GroupWise®:

- Attend any of the following sessions:
 - > BUS203 – Deploying GroupWise on Linux
 - > IO105 – Novell GroupWise Introduction, Overview and Futures
 - > IO106 – Novell Teaming + Conferencing: Better Collaboration for All
 - > IO108 – Everything Your Boss Needs to Know about Novell
 - > TUT112 – What's New in GroupWise 7 SP1
 - > TUT113 – Novell Teaming + Conferencing: Understand the Nuts and Bolts
 - > TUT203 – Tips and Trick on GroupWise Administration
- Stop by tables A2 – A8 in the technology lab
- Visit www.novell.com/groupwise

Novell®

Unpublished Work of Novell, Inc. All Rights Reserved.

This work is an unpublished work and contains confidential, proprietary, and trade secret information of Novell, Inc. Access to this work is restricted to Novell employees who have a need to know to perform tasks within the scope of their assignments. No part of this work may be practiced, performed, copied, distributed, revised, modified, translated, abridged, condensed, expanded, collected, or adapted without the prior written consent of Novell, Inc. Any use or exploitation of this work without authorization could subject the perpetrator to criminal and civil liability.

General Disclaimer

This document is not to be construed as a promise by any participating company to develop, deliver, or market a product. It is not a commitment to deliver any material, code, or functionality, and should not be relied upon in making purchasing decisions. Novell, Inc. makes no representations or warranties with respect to the contents of this document, and specifically disclaims any express or implied warranties of merchantability or fitness for any particular purpose. The development, release, and timing of features or functionality described for Novell products remains at the sole discretion of Novell. Further, Novell, Inc. reserves the right to revise this document and to make changes to its content, at any time, without obligation to notify any person or entity of such revisions or changes. All Novell marks referenced in this presentation are trademarks or registered trademarks of Novell, Inc. in the United States and other countries. All third-party trademarks are the property of their respective owners.

